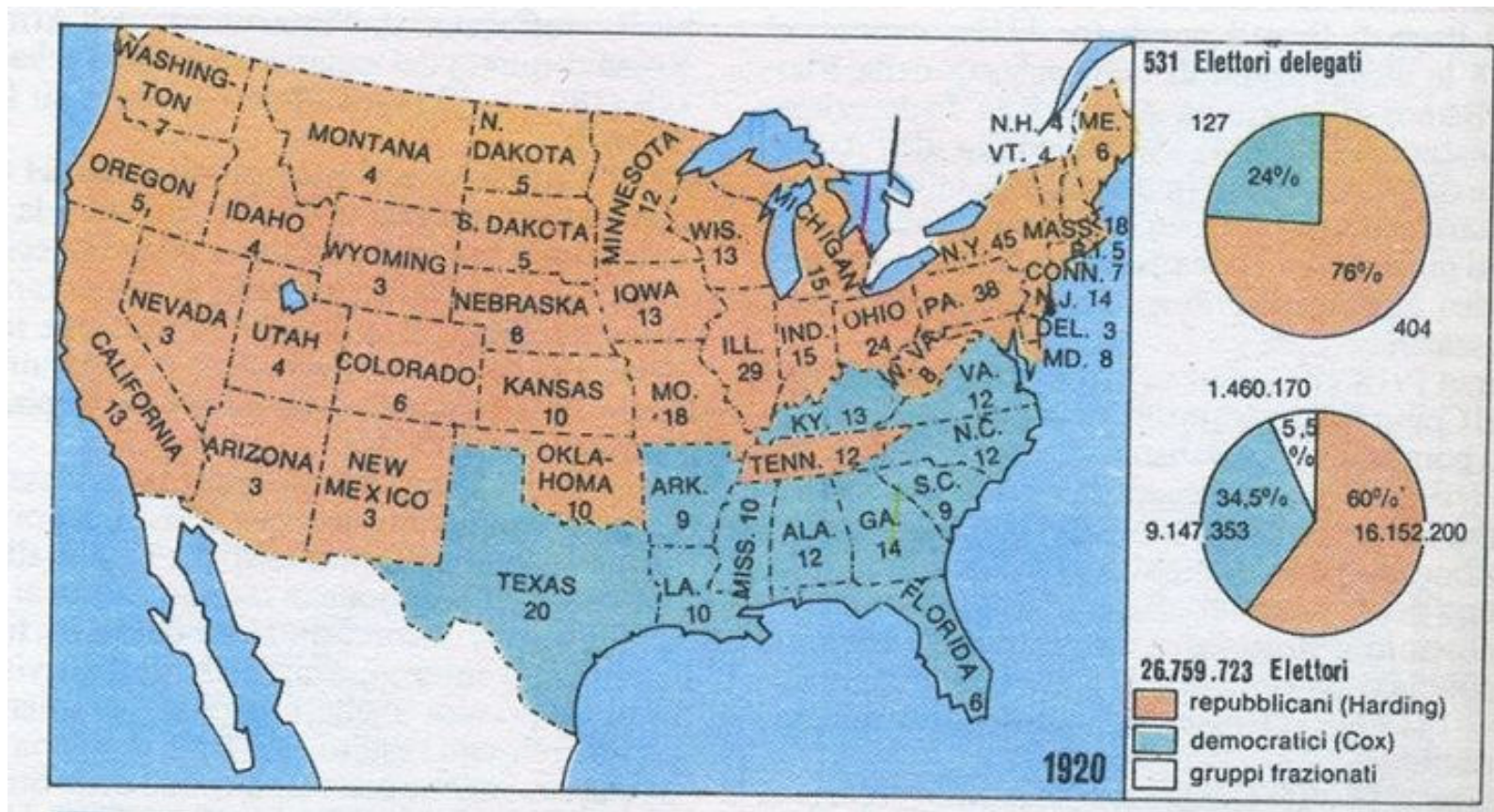


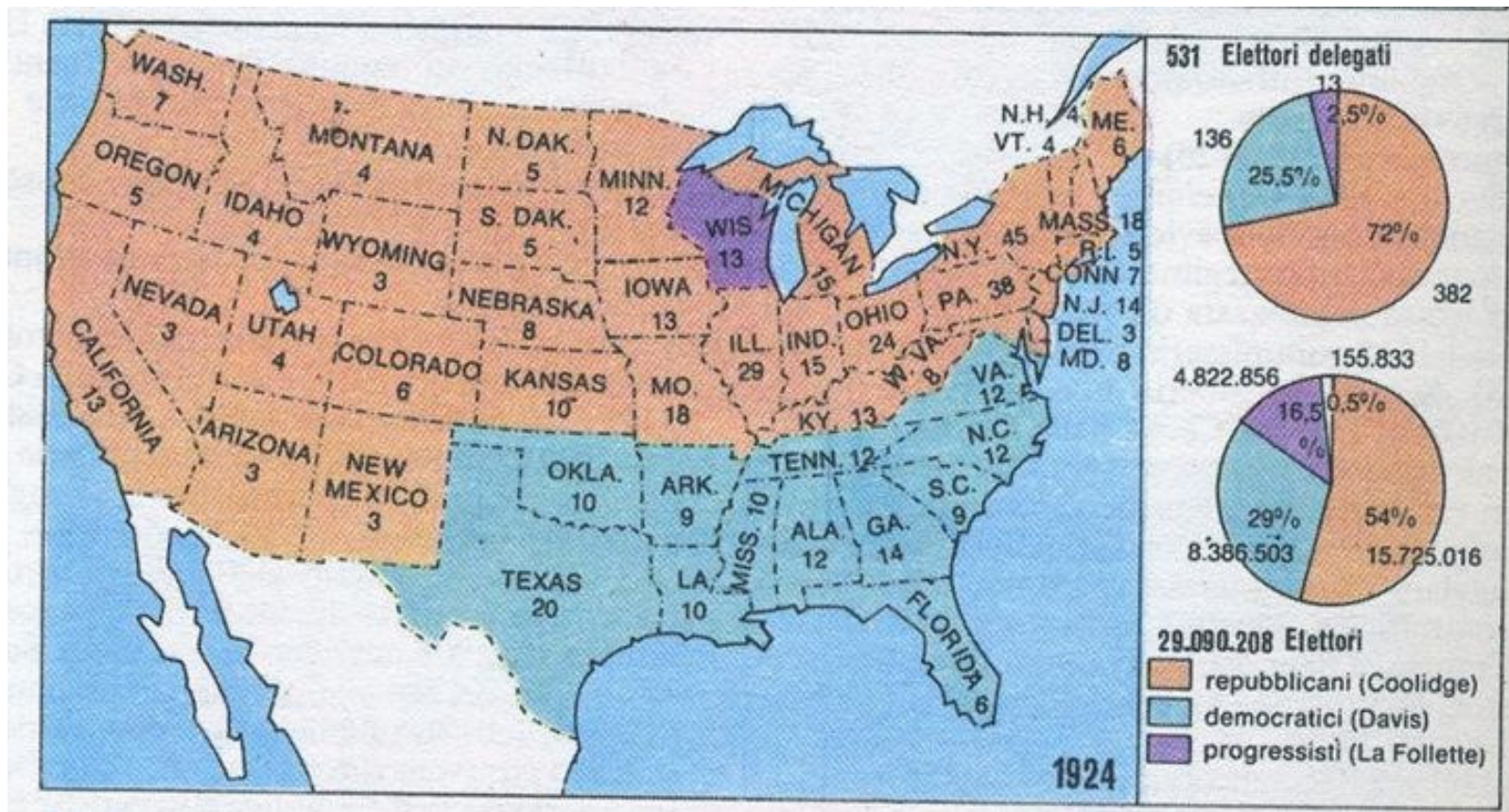
Gli Stati Uniti

*La crisi del 1929
e il “New Deal”*

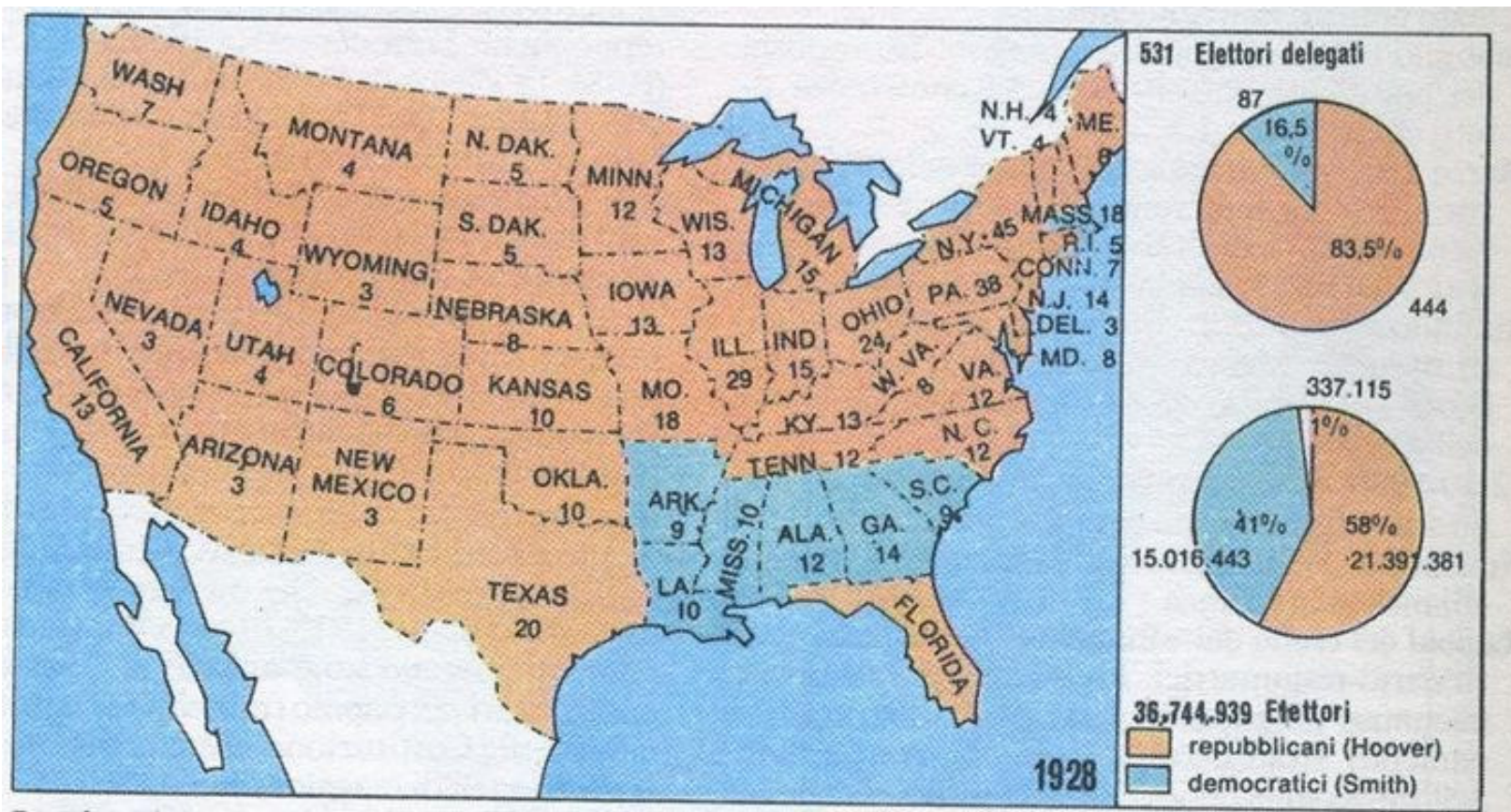
Le elezioni del 1920



Le elezioni del 1924

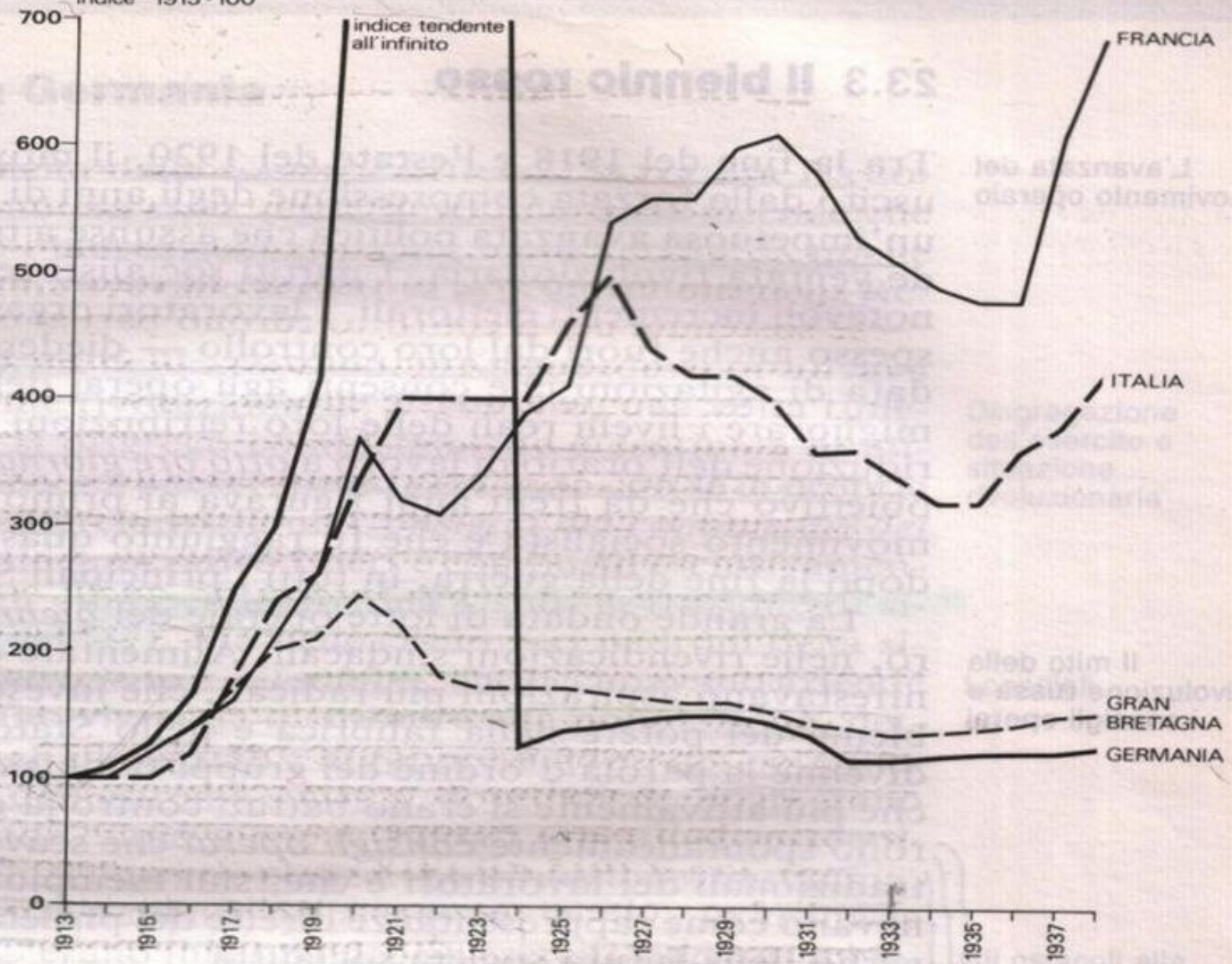


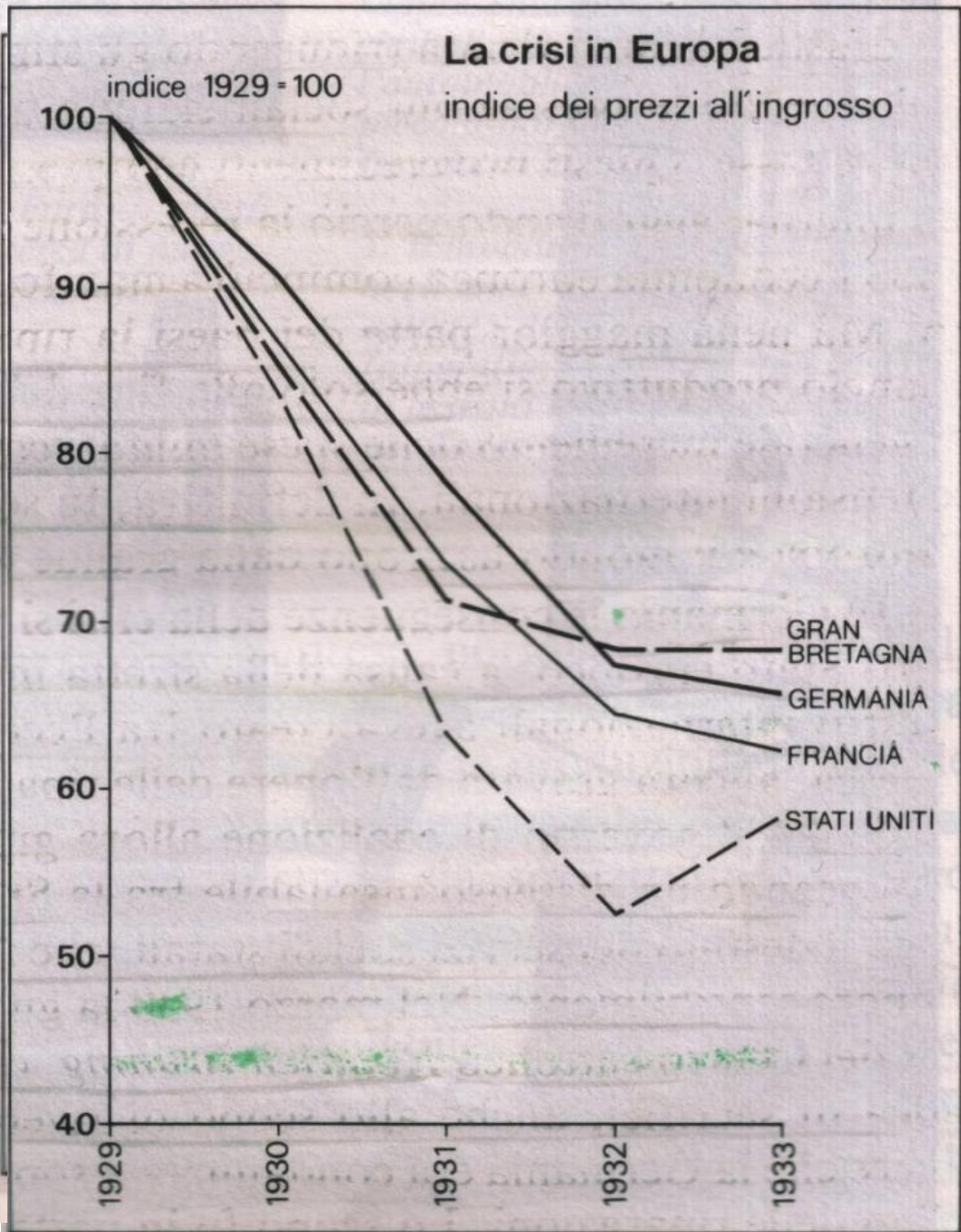
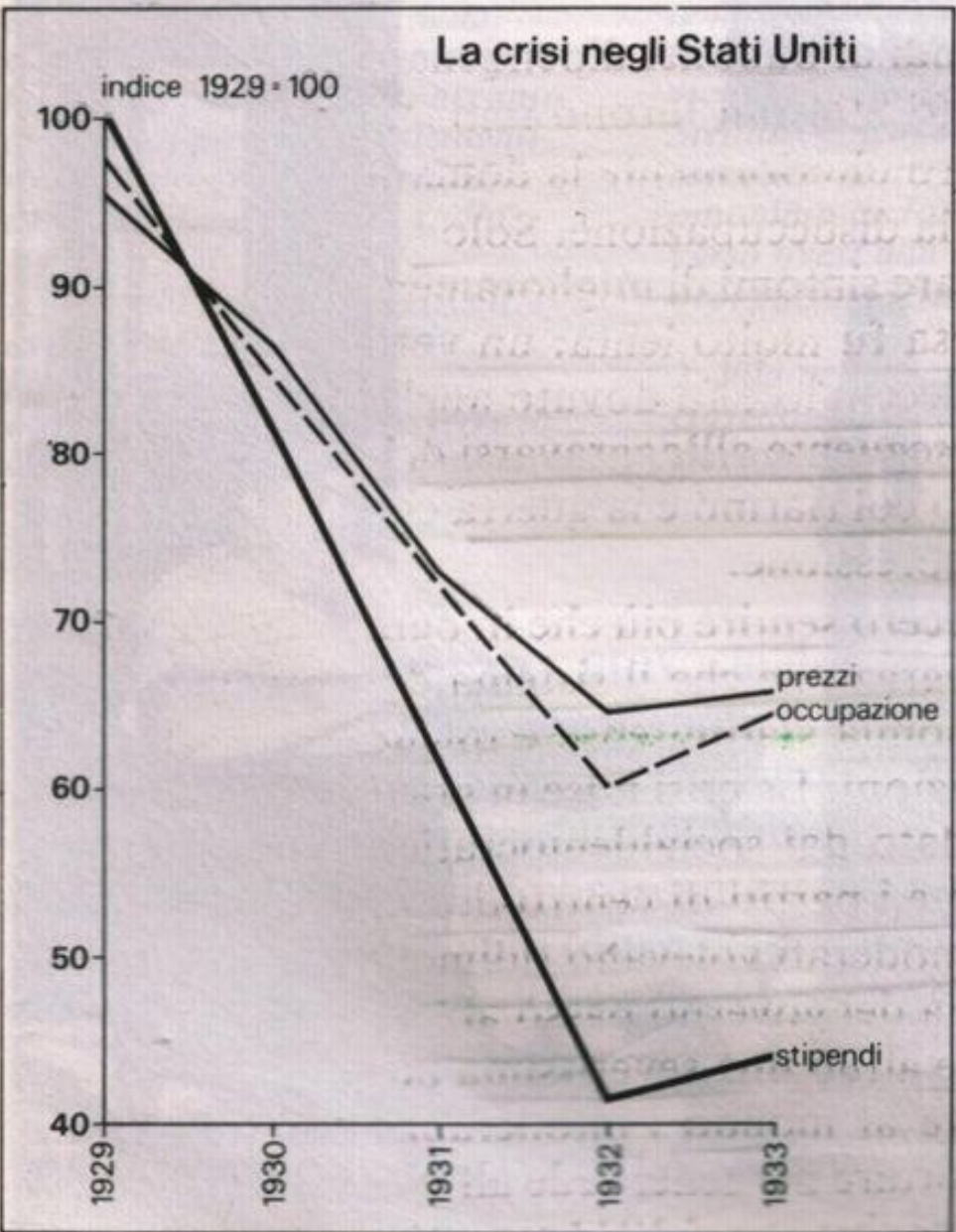
Le elezioni del 1928



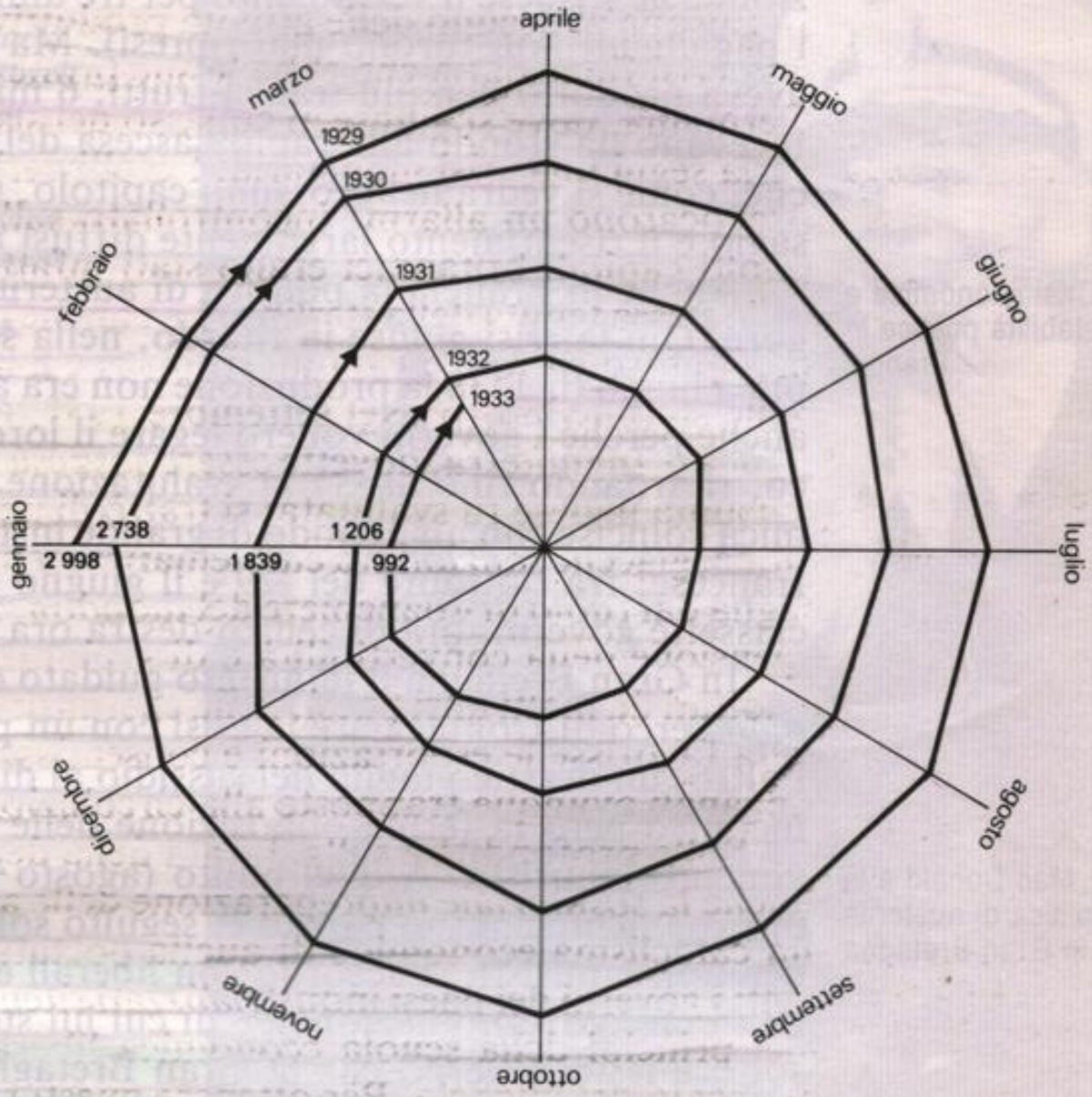
Costo della vita in Europa dal 1913 al 1938

indice 1913 = 100

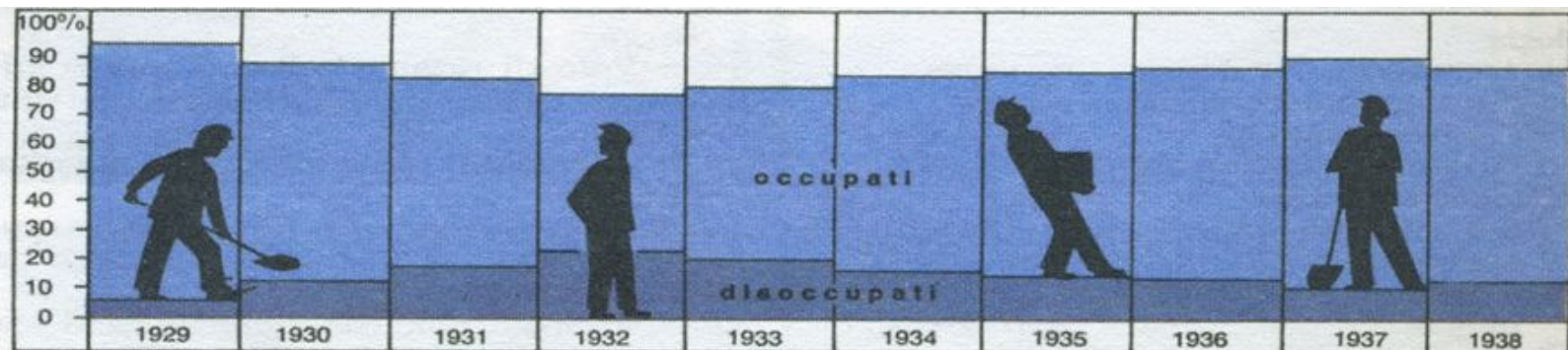




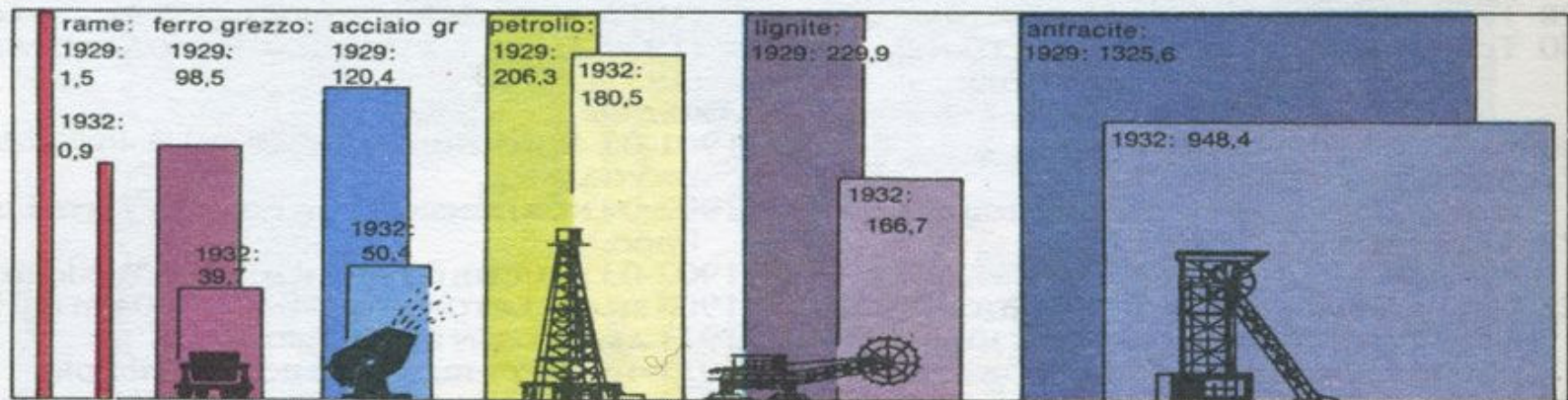
La contrazione del commercio mondiale, 1929 - 1933



Gli effetti della crisi nel mondo

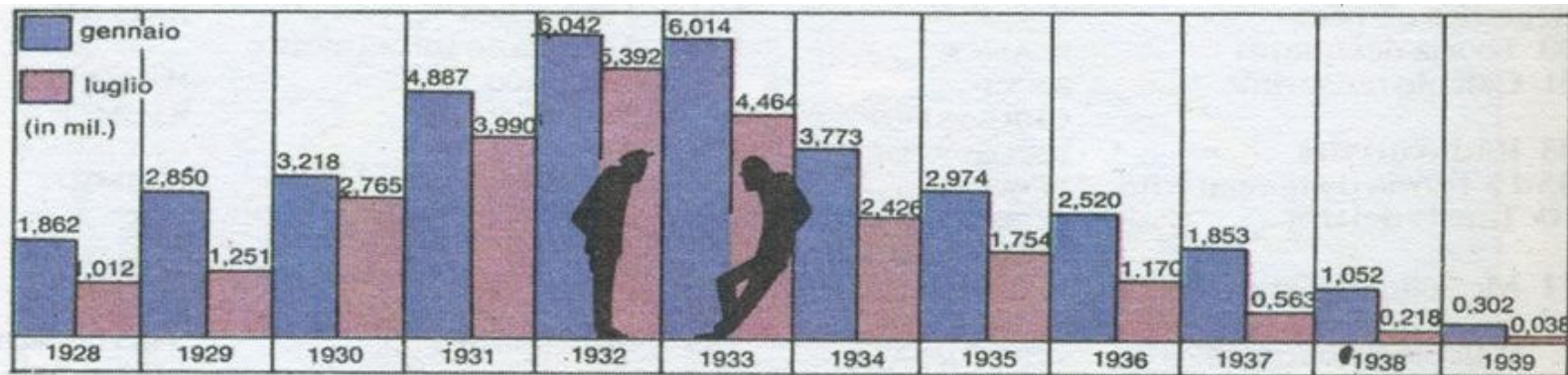


Lo sviluppo della disoccupazione nel mondo, 1929-1938

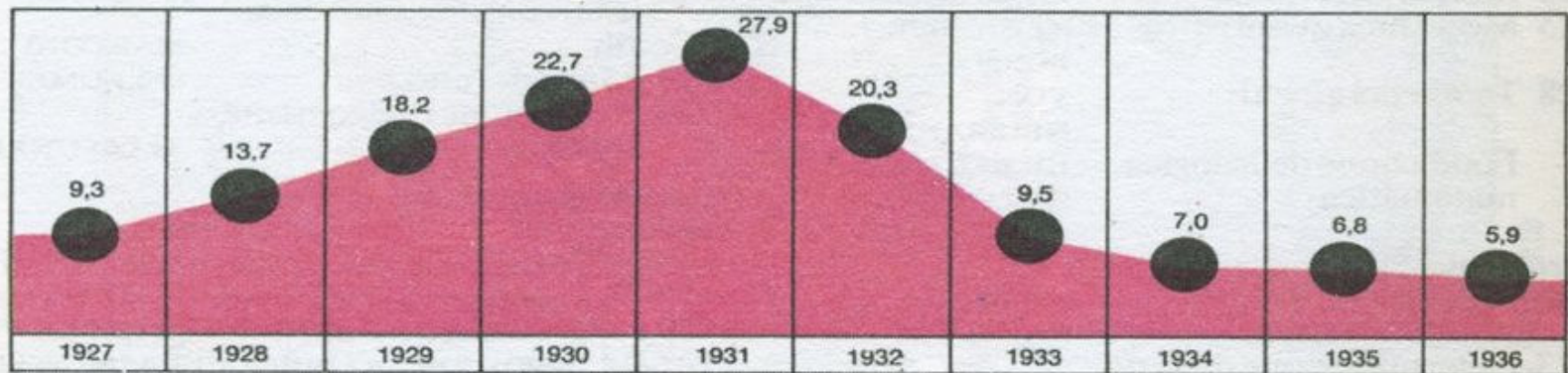


Flessione della produzione mondiale (in milioni di t)

Gli effetti della crisi in Germania

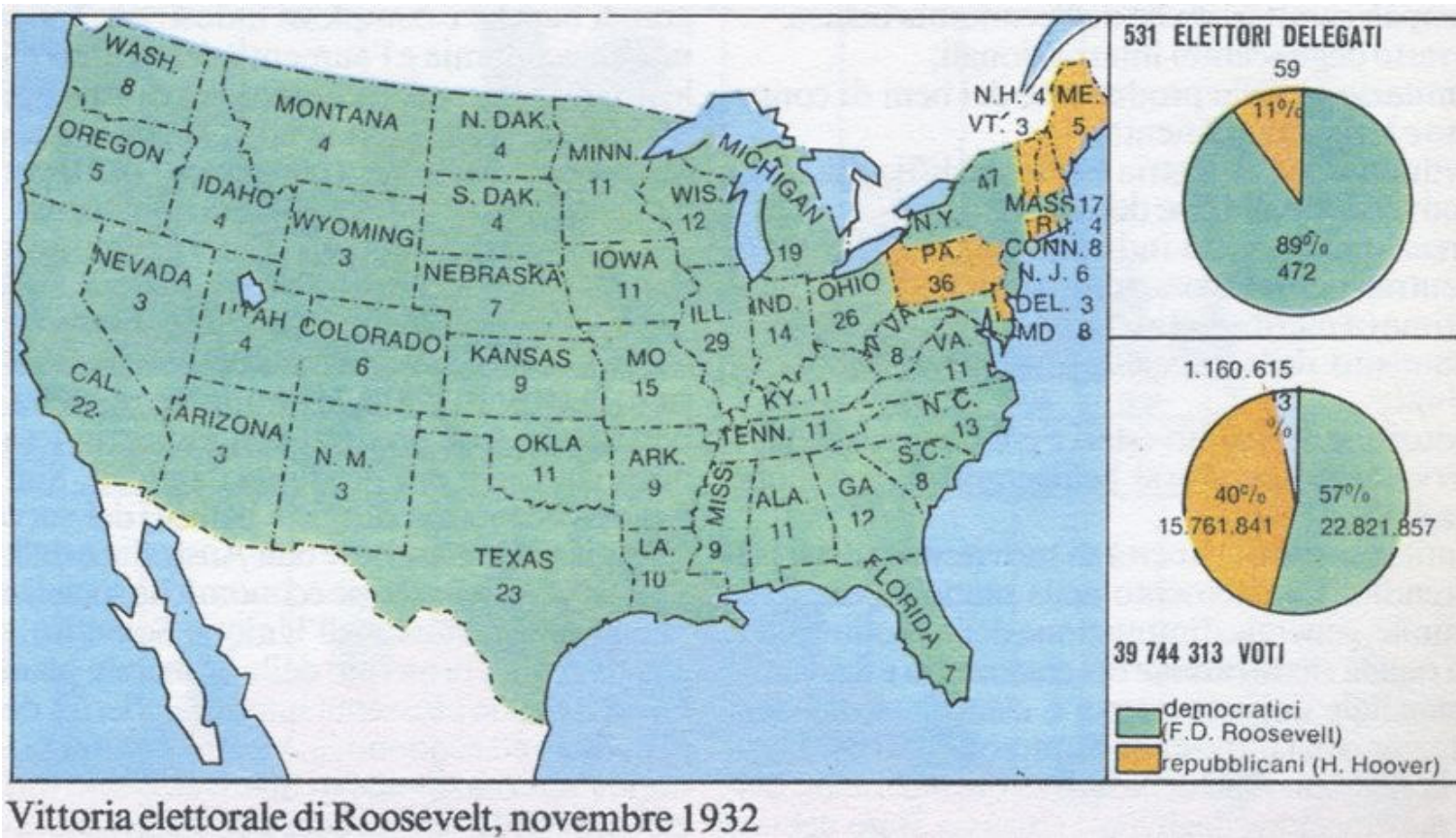


Lo sviluppo della disoccupazione in Germania, 1928-1939



Fallimenti e procedure di concordato in Germania (in migliaia), 1927-1936

Le elezioni del 1932



Vittoria elettorale di Roosevelt, novembre 1932

Tennessee Valley Authority



La «Tennessee Valley Authority»